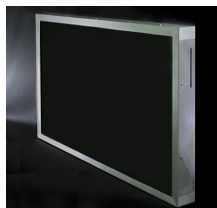


17 October 2007

By: Alex Vochin, Technology Editor



The Lumenlab Q

[Lumenlab Q: The Computer Hidden Within an 1080p HDTV](#)

A rather unusual, yet interesting combo

It would seem that PC/TV combos are becoming increasingly popular nowadays, due to the fact that they can actually provide the best of both worlds, especially for those people who use their computers as multimedia centers. And one of the most interesting devices of this type we've come across lately is the Q model offered by Lumenlab, a device that combines a very powerful computer with a true 1080p Full HD 42-inch LCD display. The computing power of the new Lumenlab Q combo is provided by Intel Core Duo processors and 2 GB of RAM memory. Furthermore, the device comes packed with 1 TB of storage power, as well as fanless 0db operation. Moreover, all of these components are replaceable and upgradeable, which means that the Q is also pretty futureproof. And since we're on the subject of components, it's worth mentioning the fact that this device is assembled in the US from American, Taiwanese, German and Japanese components, the company avoiding, for some reason, Chinese parts and labor. The device is also capable of providing full 1080p video 'straight from the chip'. Unlike DVI and HDMI, the Q's embedded computing platform utilizes dual onboard digital video data buses (2xLVDS), eliminating the need to convert HD pixel data to another format for transmission. Furthermore, with Lumenlab's Hotwire networking technology, the Q's powerplug is the only interface required for streaming HD video, HD audio, broadband data or providing a higher level of automation. Another interesting fact worth mentioning about Lumenlab's device is the fact that it's an ecologically sound product that meets the standards for RoHS and Energy Star compliance and contains no hazardous substances and does not emit VOCs during use. Unfortunately, there's no word on the pricing or availability of the Lumenlab Q for now, but we sure do hope it's not extremely expensive, as it could be something quite interesting to have around the house. We are just a few, but there are many of you, Softpedia users, out there. That's why we thought it would be a good idea to create an email address for you to help us a little in finding gadgets we missed. Interesting links are bound to be posted with recognition going mainly to those who submit. The address is .