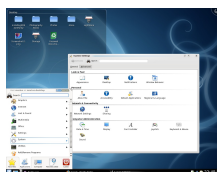


29 July 2008

By: Marius Nestor, Linux Editor



KDE 4.1.0 on Ubuntu 8.04.1 LTS

[How to Install KDE 4.1 on Ubuntu 8.04](#)

Step-by-step tutorial with screenshots!

KDE 4.1 is finally out today, as you probably already know, and it comes with a lot of innovations for the Linux desktop. KDE 4 is the next generation of the popular K Desktop Environment, which seeks to fulfill the need for a powerful yet easy-to-use desktop, for both personal and enterprise computing. The new version provides increased stability over the first KDE 4 version and more eye candy!

So, if you don't want to download an openSUSE-based KDE 4.1 Live CD or to wait until a stable distribution is released with KDE 4.1.0 as the default desktop, we will teach you how to install it on your existing Ubuntu 8.04 or 8.04.1 LTS desktop.

Editor's note: *To eliminate the "terminal madness" for Linux beginners, we've used apt-url links in this tutorial. So, just click the links in the guide in order to install the packages!*

Step 1 - Add KDE 4.1.0 Repositories

Go to *System -> Administration -> Software Sources...*

...enter your password and the Software Sources window will appear. Click the second tab "Third-Party Software," then click the 'Add' button and paste the following code in the new window that will appear:

```
[CODE=0]
deb http://ppa.launchpad.net/kubuntu-members-kde4/ubuntu hardy main
[CODE=1]
```

Now, click the 'Add Source' button and, immediately after, the 'Close' button of the main window. It will ask you if you want to reload the information about available software. Click the 'Reload' button and wait for the Software Sources window to close.

Step 2 - Install KDE 4.1.0

All you need to do now is to...

[Click here to Install KDE 4.1](#)

Then click the 'Yes' button to install the packages (enter your password when asked)...

Wait for the KDE 4.1 packages to be downloaded....

When the download is over (it will take a while if you have a slow bandwidth) you will be asked to choose a display manager (GDM or KDM-KDE4). Just click Forward...

The installation will start and, when it is over, just log out. Then select the 'KDE 4' option in the "Select Session" entry of the GNOME login manager and voila... KDE 4 fun on your desktop!

Enjoy the brand new KDE 4.1.0 on your Ubuntu 8.04 (Hardy Heron)!

Credits: *Special thanks to Harald, Guillaume, Steve, Jon, Arby and the whole [Kubuntu](#) team for preparing these packages.*

Optional Step - Restoring the Original Ubuntu Bootsplash

The KDE 4.1 installation will overwrite your current Ubuntu bootsplash theme. If you don't like the blue Kubuntu one, and you want to restore it, follow the instructions below.

[Click here to Install StartUp-Manager](#)

When the installation is over, go to *System Administration StartUp-Manager...*

...enter your password, and wait for the main window to appear. Then, go to the second tab ("Appearance") and select the *usplash-theme-ubuntu* from the 'Usplash themes' section...

Wait for the application to apply the new settings and you're done!