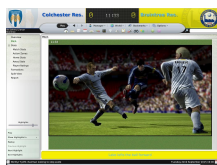


14 November 2008

By: Andrei Dumitrescu, Games Editor



3D match engine
Sports Interactive

[Football Manager 2009 Patch Arrives Today](#)

Alongside the game

PC gaming has been declared dead quite a few times until now, with one of the most quoted causes for its demise being, together with the prevalence of piracy, the way developers release games that feature show-stopping bugs. Videogames for the [Xbox 360](#) and PlayStation 3 get around this by requiring developers to submit their games for a review process. Unfortunately, only gaming outlets review games that come for the PC.

The most recent case in point is [Football Manager 2009](#), from Sports Interactive, the latest installment in the series that arguably provides the best football simulation out there. Developers Sports Interactive are gearing up to release the first patch for the game on Friday, just as the videogame itself makes its debut in Europe. It's basically a day one patch that fixes issues that the Quality Assurance department should have taken care of, which makes it so that players are likely to be less than happy about needing to apply it.

While extensive release notes are not available yet, it seems that the patch will address issues related to graphics card compatibility with the new 3D match engine and some problems related to how the game treats long term injuries of the players. Sports Interactive is adamant that all problems, especially those related to the new 3D match engine, will be addressed as quickly as possible in order to provide the best experience for all those interested in being virtual football managers.

Football Manager 2009 is set to offer a new standard in virtual football management. Alongside the already "tried and true" game concept that the company has used in its series, there are significant improvements made to the transfer of players and to the man management options. The 3D match option is also interesting as it allows players to see how their tactics play out on the pitch.