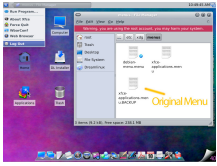


13 October 2009

By: Marius Nestor, Linux Editor



Dreamlinux 4.0 XFCE
Alpha
Dreamlinux

[First Alpha of Dreamlinux 4.0 XFCE Edition Released](#)

Now with Xfce 4.6.1.2 and Linux kernel 2.6.29.3

The Dreamlinux team [announced](#) earlier today (October 13th) the immediate availability of the alpha version of the upcoming Dreamlinux 4.0 XFCE Linux distribution. This Xfce edition of the Dreamlinux operating system is a new project which tries to combine the good looks of the main Dreamlinux distribution with the speed of the Xfce 4.6.1 desktop environment, and it is also powered by Linux kernel 2.6.29. Without further introduction, here are the main features of Dreamlinux 4.0 XFCE Alpha:

- Linux kernel 2.6.29.3-dream-1;
- Xfce 4.6.1.2 desktop environment;
- Included packages from the Debian Squeeze software repositories;
- Added the Smart Package Manager software;
- Included various multimedia packages from the Debian Multimedia Testing repositories;
- The Engage dock was replaced by Wbar;
- Added a new "Applications Folder" for the DEM (Dreamlinux Executable Modules) packages;
- Added the popular and powerful SMPlayer package for all your audio and video needs (including HD playback);
- Added the Go_Steel GTK theme, based on the Aurora GTK engine.

Being in early development, there are some known issues in this alpha release. For example, there is no installer for the Nvidia video drivers (only manual install), and some Dreamlinux scripts are not working, such as Easy-install, Easy-Remaster, Color-Folders, Livedream, Theme-switcher, and others.

About Dreamlinux

Dreamlinux is a Brazilian Linux distribution, based on Debian, that can boot directly into XFCE or GNOME, depending on the user's preferences. It employs a totally independent architecture called Flexiboost, based on overlaid modules. It allows the co-existence of two or more different window managers, sharing the same customized appearance. The environments can share all the available applications. Dreamlinux features its own software, like DLI (Dreamlinux Installer), EasyInstall (for point-and-click package installation), MkDistro (for distribution remastering), a configuration tool for the Engage dock, a Control Panel, and much more applications.

Download Dreamlinux 4.0 XFCE Alpha right now from [Softpedia](#). Remember that this is an alpha release and it should not be installed on production machines. It is intended for testing purposes only.