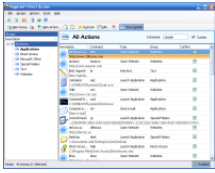


23 November 2006

By: Ionut Ilascu, Editor, Software Reviews



[Speed Up Your Access](#)

No more by-passes for launching applications

When time is pressing, everything you do seems like it is not done fast enough. I get that whenever I have to go somewhere and I still have some files to move or to rename. I am under the impression that opening the application from the Start menu takes too long, and I do not like to keep too many shortcuts on my desktop for two reasons: it looks bad and it would take me much too long to find the shortcut I need. So the keyboard becomes an essential tool. And yet, it still seems that it takes too long to launch the application. But Nagarsoft came with the solution and developed an application that speeds up the access to different areas of your computer. It is a quick launcher that allows the user to open applications, websites, folders, documents, etc. by simply typing a command on the desktop or in any other active application. Sounds good and - to tell you the truth - since I installed the software and discovered its powers I am all hyped up about it. Direct Access has a user friendly and very organized interface that gives you access to the key applications of your computer. By simply typing the command for the action and pressing F1 you will be opened the desired application. I guess this will be fast enough for me from now on and I will not complain about time anymore (at least for a while). The software proves its flexibility by allowing the user to edit the commands and add new actions. If you are not content with the default applications included in Direct Access you can edit or delete them and customize Direct Access to your personal needs. The default configuration of Direct Access is already set and includes a number of folders, applications and websites to open. The default launch commands include Windows applications like Calculator, Command Prompt, Windows Explorer, IE, Notepad, Outlook Express, etc., special folders (Control Panel, Desktop, My Network, Recycle Bin, My Computer, My Documents and Printers). Another special section is Websites, where there are some popular websites included. This feature is extremely useful as it allows you to quickly open your favorite website by simply typing the corresponding command. The web page will automatically open in the default web browser. The actions available in the software are launching the application, opening a website, sending an email, and auto text. Websites as well emails will be opened with the default programs. Autotext feature works only if you have a text editor opened and will insert the predefined text whenever you type the command. If you type some of the commands into a text editor you will be prompted to choose the action by being displayed a little confirmation box that warns you about typing the command and what that command will do. Ignoring the message and continuing with your writing will make it disappear. I wanted to see what happens if I typed in my text editor a command for autotext. I was curious to see if the command would be preserved in the text or was replaced by the autotext itself. The developer thought the software to this detail and the command will not intrude in your text, the predefined replacing it. Some of you may not be content with the folders available in the software and you may want to add new ones. The flexibility of Direct Access allows you add as many folders and applications as you want. I found out that there would have been one little problem with all those commands. The user may want to set a number of ninety to be opened with Direct Access. I do not know about you, but it would be pretty hard to me to remember all those commands, no matter how intuitive they are. But one of the software's features is defining commands not only for the applications themselves, but also for the entire group. To give an example I placed a screenshot (next to last one). For that to appear I defined the Special Folders command "folders". After typing it the whole Special Folders directory appeared and I could choose the desired option in there. In the options menu, under Command, you can change the confirm command by choosing one of the available

presets. For fast editing a command the user simply types the command and presses Shift+the confirmation command key. One more thing, if the confirm box is not ticked, you will not be prompted with the confirmation box and you will no longer have to press F1 key to launch, but instead the command will be executed automatically. **The Good** The software is easy to use and reaches new levels of utility. The flexibility gives the user the possibility of adding as many applications to be launched and to define a command for the entire group. **The Bad** Although the confirmation command keys are very well chosen I was expecting the user to be able to set it by him/herself, as well as the combination for editing that command. But this is not at all a drawback. **The Truth** All I can say in the end is to try the software and decide for yourselves. I am sure that advanced users will be wooed by the ease of use, flexibility and functionality of Direct Access. For the software to work you will have to install .NET 1.1. If you have .NET 2 installed there is no problem as no conflict will occur. For a software that reached only version 1.2.0 it is amazing what it can do. The thirty days trial period is more than enough to test it. *Here are some snapshots of the application in action:*