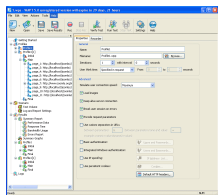


27 December 2007

By: Catalin Bocanu, Web News Editor

WAPT User Interface  
SOFTPEDIA

## [A Short Presentation of WAPT](#)

### *Realistic Determination of Websites Performance*

At the present time, many methods and algorithms for testing web applications performance in various conditions are available. Knowing the web application performance in different loading situations, the problems concerning the finding of optimal hardware configuration and respectively the optimal software parameters could be solved in a more efficient manner. **WAPT** is a Windows based application that allows you to test a web based application or website in different loading conditions. It simulates the presence of a specified number of virtual users, which could perform various actions in the same time. There are many adjustable parameters that will influence every virtual user's behavior and in the same time the test results accuracy. The modality of usage in the case of WAPT software is simple as principle: you must define a scenario depending of what objectives are proposed to be evaluated during the tests, such as overall performance of the website (web application), stress capabilities, real user experience and more. In the scenario, the simulation parameters are specified: the number of virtual users, the user's thinking time, the user agent type and the connection speed. For every virtual user the actions are grouped as initial, main and final. In case of every user session a correspondence between the order and the number of executed actions is established. This simulation approach tends to create a more realistic situation. Every virtual user will have its own connection parameters and performed actions, such as different IP addresses, different connection speed, cookies and more. The simulation results are presented as tables and graphs. The results contain performance data, response time, bandwidth usage and error reports. Based on the simulation results you can evaluate the performance level of your web application and identify the improvements or adjustments that could be necessary. If you want to improve the quality of the websites or applications that you develop and, as a consequence, the overall user experience with the help of this software, the simulations performed should be conducted in different conditions and repeated in order to eliminate all possible results errors.